



Pest e-alerts



Entomology and Plant Pathology, Oklahoma State University
127 Noble Research Center, Stillwater, OK 74078
405.744.5527

Vol. 16, No. 33

<http://entopl.okstate.edu/pddl/pdidl>

Aug 29, 2017

Fall Armyworm Reminder:

Tom A. Royer, Extension Entomologist

Check out the last newsletter [Vol 16, no. 32](#) that talks about fall armyworm in wheat.

Soybean Defoliators Reported

Tom A. Royer, Extension Entomologist

I have received several reports of caterpillars feeding on soybean. There are three caterpillars that commonly defoliate soybean. It is important to first, properly identify them, and secondly, properly estimate defoliation before selecting an insecticide for control. At first glance, these three caterpillars are “lookalikes” but they can be easily distinguished with closer inspection. A key is to count their feet!

Figure 1: Silhouette of three common foliage-feeding soybean caterpillars: (A: soybean looper, B: green cloverworm, C: velvetbean caterpillar, corn earworm).

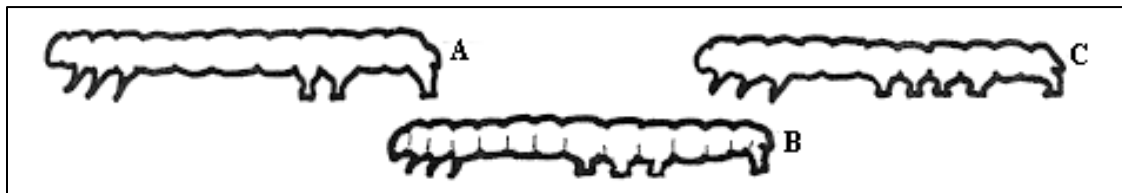


Image courtesy of North Carolina State University

Cabbage/Soybean loopers are light green and as they mature they develop white stripes, two on top and two on each side. **They have three pairs of prolegs, two pairs on the abdomen and one pair at the anal end (Figure 1 A).** Larvae move in a characteristic “looping” motion. They reach about 1.2 inches long at maturity.



Clemson University-USDA Cooperative
Extension Slide Series, Bugwood.org



Green cloverworm larvae can be confused with cabbage/soybean loopers because they also move in a “looping” motion. They are pale green with two longitudinal stripes, and **they have four pairs of abdominal prolegs, three pairs on the abdomen and one pair at the anal end (Figure 1 B).** A mature larva measures 1.15 inches.

Clemson University-USDA Cooperative
Extension Slide Series, Bugwood.org

Velvetbean caterpillars vary in color from green, to brown, to black. As they mature they develop white stripes, one on top and two on each side. They have **five pairs of prolegs, four pairs on the abdomen and one pair at the anal end (Figure 1 C)** and reach about 1.9 inches at maturity. Larvae thrash violently when disturbed.



Clemson University-USDA Cooperative
Extension Slide Series, Bugwood.org



Corn earworm (also known as the soybean podworm) is generally a pod feeder. **They have five pairs of prolegs, four pairs on the abdomen and one pair at the anal end (Figure 1 C).** The body color varies with the host plant and ranges from shades of pink, yellow, green, brown, and black. Larvae usually have darker or lighter stripes running lengthwise on the body and can be positively identified by the presence of short, sharp microspines between the hairs on the body. Mature larvae reach 1.2 inches.

Clemson University-USDA Cooperative
Extension Slide Series, Bugwood.org

The next step is to assess the level of defoliation. To estimate defoliation in soybean, randomly collect 6 leaflets (2 from the lower, 2 from the middle, and 2 from the top of the canopy) in 5 locations and estimate % defoliation by averaging the defoliation level from 30 leaflets using Figure 2 (below). Treatment thresholds are listed in Table 1 (below).

Figure 2: Visual representation of percent defoliation in soybean.

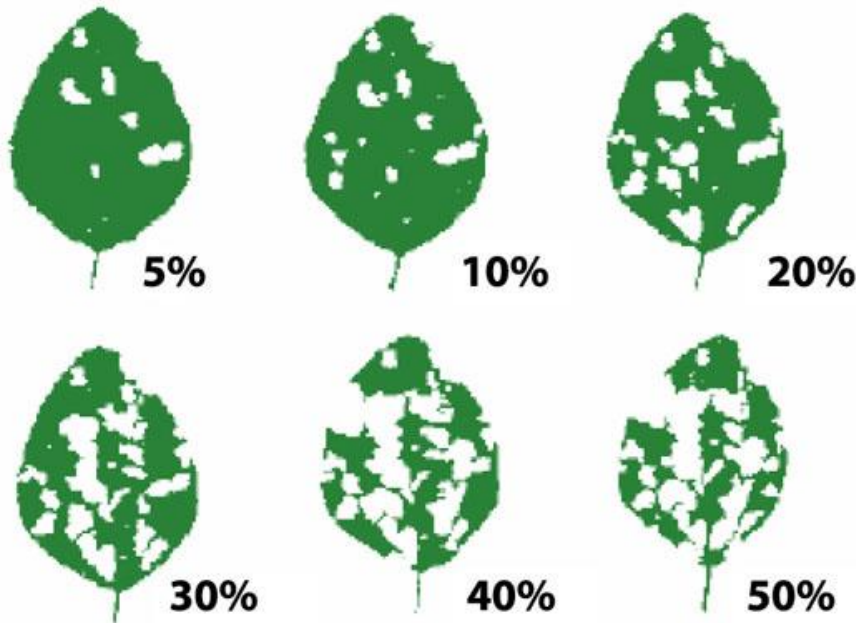


Table 1: Suggested treatment thresholds based on defoliation (or pod feeding) and growth stage in soybean.

PLANT STAGE	TREATMENT THRESHOLD
3-leaf to beginning of bloom	35% average defoliation
Bloom to pod fill:	15-20% average defoliation
Full pod fill to maturity:	35-40% average defoliation, or 5-10% pods damaged.

If you have some pod feeding as well as defoliation, make sure you are protecting the pods. The treatment threshold for corn earworm is 2 per row foot. If you have a combined set of defoliators and pod feeders, it makes a treatment decision more easy.

Selection of insecticides can depend on the predominant species of caterpillar present in the field. Soybean loopers are often resistant to pyrethroid insecticides so there are more limited choices for insecticide control.

Specific recommendations for control of soybean caterpillars are listed in CR-7167 Management of Insect and Mite Pests in Soybean <http://pods.dasnr.okstate.edu/docushare/dsweb/Get/Document-2347/CR-7167web2016.pdf> and E-832 OSU Extension Agents' Handbook of Insect, Plant disease and Weed Control.

given herein is for educational purposes only. Reference to commercial products or trade names is made with the understanding that no discrimination is intended and no endorsement by the Cooperative Extension Service is implied.

Oklahoma State University, in compliance with Title VI and VII of the Civil Rights Act of 1964, Executive Order 11246 as amended, and Title IX of the Education Amendments of 1972 (Higher Education Act), the Americans with Disabilities Act of 1990, and other federal and state laws and regulations, does not discriminate on the basis of race, color, national origin, genetic information, sex, age, sexual orientation, gender identity, religion, disability, or status as a veteran, in any of its policies, practices or procedures. This provision includes, but is not limited to admissions, employment, financial aid, and educational services. The Director of Equal Opportunity, 408 Whitehurst, OSU, Stillwater, OK 74078-1035; Phone 405-744-5371; email: eeo@okstate.edu has been designated to handle inquiries regarding non-discrimination policies: Director of Equal Opportunity. Any person (student, faculty, or staff) who believes that discriminatory practices have been engaged in based on gender may discuss his or her concerns and file informal or formal complaints of possible violations of Title IX with OSU's Title IX Coordinator 405-744-9154.

Issued in furtherance of Cooperative Extension work, acts of May 8 and June 30, 1914, in cooperation with the U.S. Department of Agriculture, Director of Oklahoma Cooperative Extension Service, Oklahoma State University, Stillwater, Oklahoma. This publication is issued by Oklahoma State University as authorized by the Vice President, Dean, and Director of the Division of Agricultural Sciences and Natural Resources.